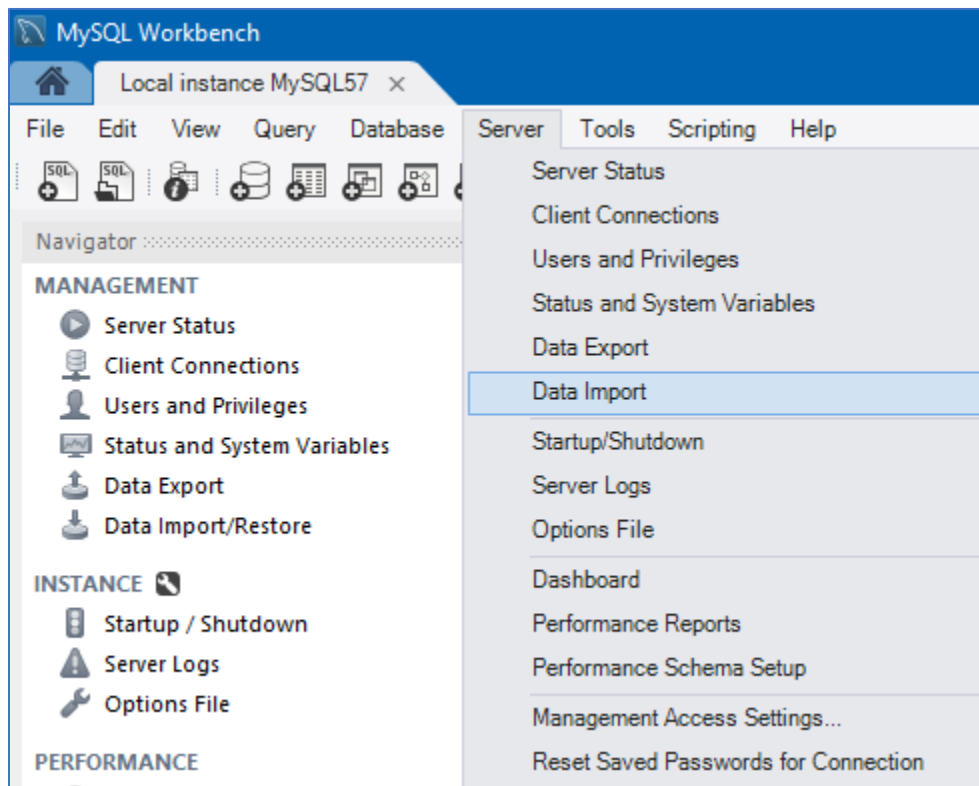


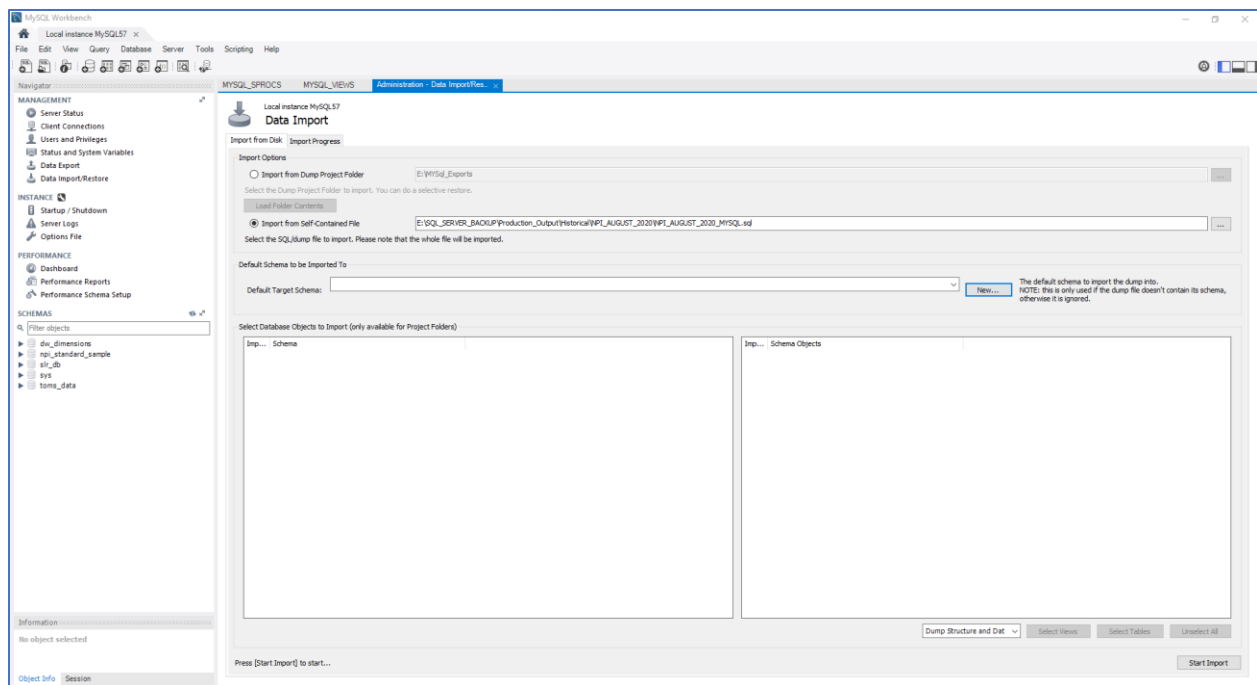
NPI Database- Installation Instructions for MySql using MySql Workbench.

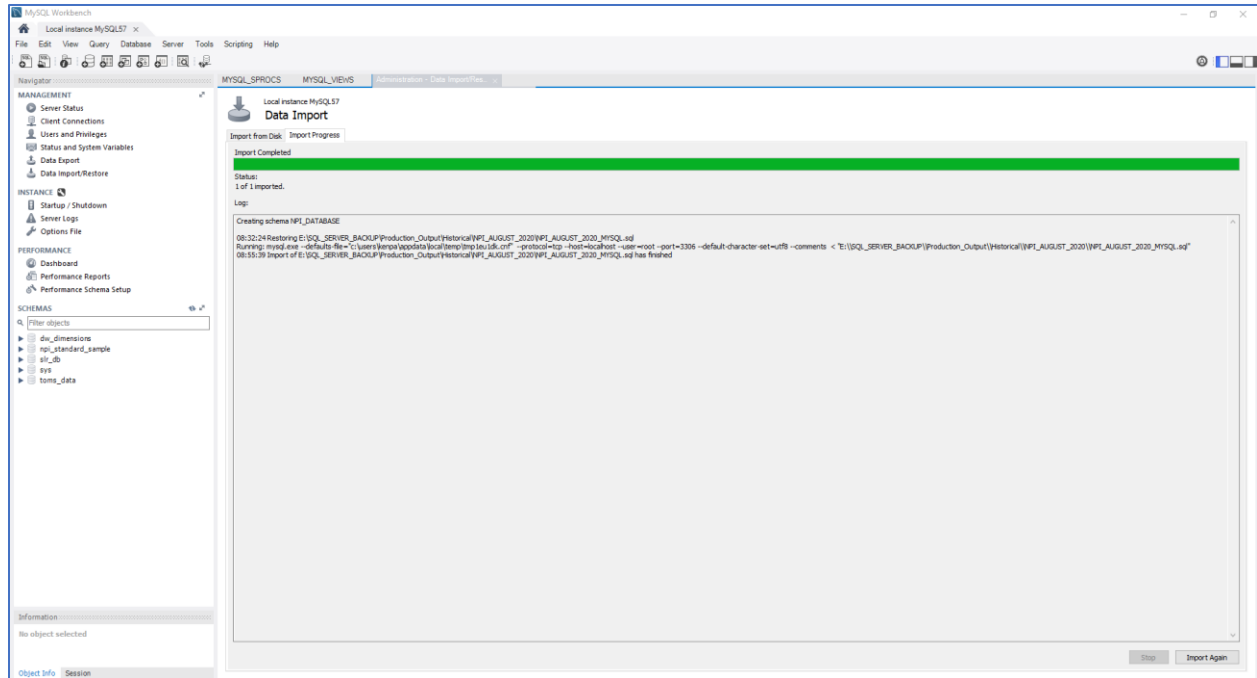
Method: Restore the File “npi_standard_sample_mysql.sql” after creating the schema “npi_standard” first.

1. File Description:
 - a. File created using the following: C:\Program Files\MySQL\MySQL Server 8.0\bin\mysqldump.exe
 - b. File will not create a schema, you must create a schema and then import into it.
2. Open MySql Workbench and connect to an instance of MySql.
3. In the schema browser right click on “npi_standard” and choose “Set as Default Schema”. If it doesn’t exist right click in the schema browser and select “Create Schema”. Create the “npi_standard” schema and then “Set as Default Schema”.
4. Click on “Tools” and then select “Data Import”.

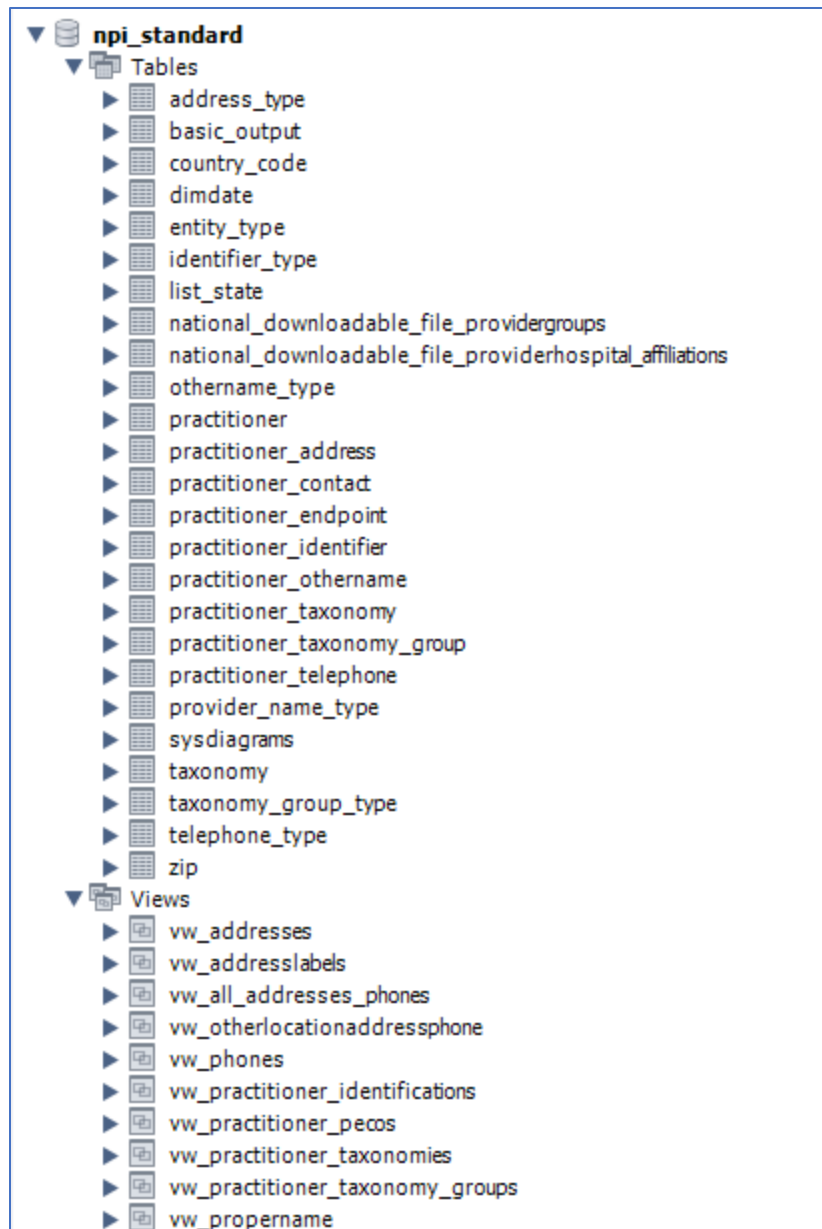


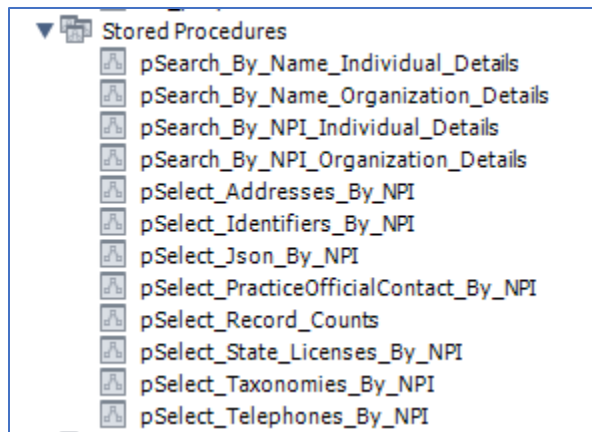
5. Click on “Import From Disk” and select the “Import From Self-Contained File”. Choose your file from the file system. Choose “Dump Structure and Data”. Choose “Default Schema to be imported to” and select “npi_standard”.
6. Click on “Start Import”. Depending on your system it will take from 1 to 15 hours to import the NPI database.
 - a. First method to make sure it’s importing...bring up “task Manager” and make certain that the drive/s that are being read from / written to, have medium to heavy usage.
 - b. Second method is to refresh the “Schemas pane” and make sure there are tables present in the NPI schema. Then Right Click on the NPI database schema and choose “Schema Inspector”. Choose the “Tables” tab. Click “Refresh” on the bottom right of that window and you should see an increase in records for the table that the import is currently writing to.





7. Once your database has finished importing the green status bar will show all green (the status bar doesn't change until the "Import" is finished). The button at the bottom will change to "Import Again".
8. You should now be all set. Click on "Refresh" icon on the left and you will see the following.





9. Included in the .zip file is a file that you may utilize to create an Entity Relationship Diagram. Same DDL as NPI_STANDARD...No Data.
 - a. NPI_ERD_CREATION_SCRIPT.sql is a standalone script which will create the database "NPI_STANDARD_SCHEMA".